

Safeguarding

Contextual Safeguarding

WHAT DOES IT MEAN?

Contextual Safeguarding is an approach to understanding, and responding to, young people's experiences of significant harm beyond their families. It recognises that the different relationships that young people form in their neighbourhoods, schools and online can feature violence and abuse. Parents and carers have little influence over these contexts, and young people's experiences of extra-familial abuse can undermine parent-child relationships.

Our children may be at risk of:

Gang related crime

Knife crime

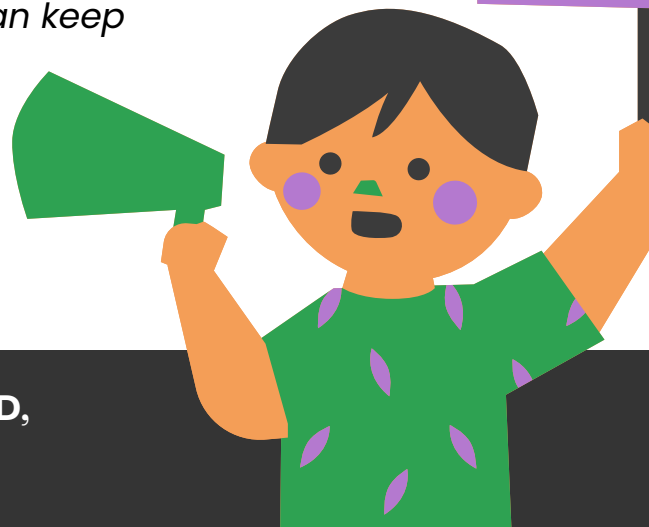
Drugs

Domestic Violence

FGM

How does our curriculum help to keep our children safe?

The PSHE curriculum in Upper Key Stage 2 'Safer Spaces' talks about these types of risks and how children can keep themselves safe and report and worries.



**IF YOU HAVE ANY CONCERNS ABOUT A CHILD,
DO NOT DELAY, TELL SOMEONE TODAY!**

Designated Safeguarding Lead - Stacey Kendall - Head Teacher
Deputy Safeguarding Lead - Trisha Highton - Deputy Head Teacher
Safeguarding Governor - The Rev Dr Naomi Wormell